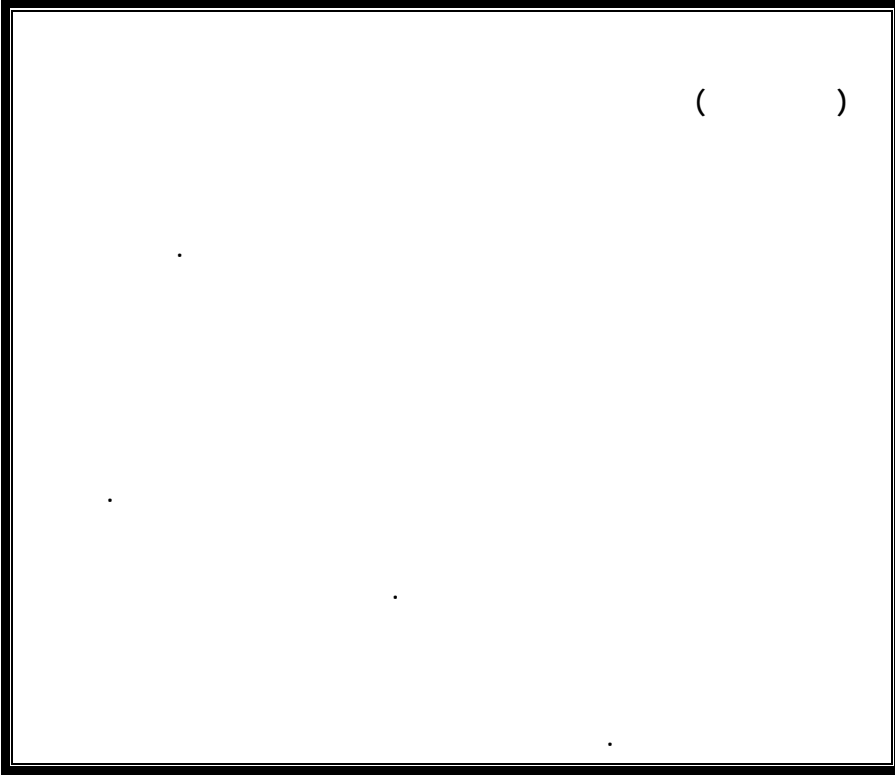


1



1

Introduction

()

() ()

Oil Painting

Tempera

Linum

: Vasari

Giovanni

Usitatissimum

Van Eyck

Aging

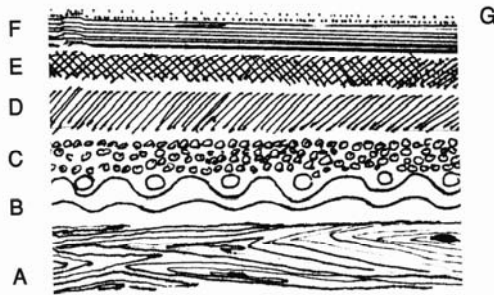
55%

20

11%

(1)

(1) :



رسم مقطعي يوضح مكونات اللوحة الزيتية

- A الإطار الخشبي الشاسيه
- B فعايش اللوحة
- C طبقتي التفريزة
- D أرضية التحضير (الأساس)
- E الطبقة اللونية
- F طبقة الفرشيش النهائية
- G طبقة الأوساخ

(1)

.218

1983

1

3 () 2 Chassis

-5 () 4 ()

.Vernice Finale

:

:()

:

Hygroscopique

Camber

Warping

(2)

⁽²⁾Para di chloro benzene

Acrylic on

. Vinyl Resins

Emile- Male. G, op, op. Cit, PP- 12- 24. -²



(2)

:
:
:
:Cracks

Flexibility

- -)

:
:
.
.
:Tears

Sulphuric Acid

40%

(3)



(3)

:()

Coat Sizing

(4)

(3)



(4)

:

(4)

:

:Fading

-1

4 Gettens, R.G. and Stout, G. L., Painting Materials, Dover Publications, New York, 1966, P. 138

Photochemical Reactions

:Darkening 2

Yellowing of oil

:" " Ultramarine Sickness

Mottled White

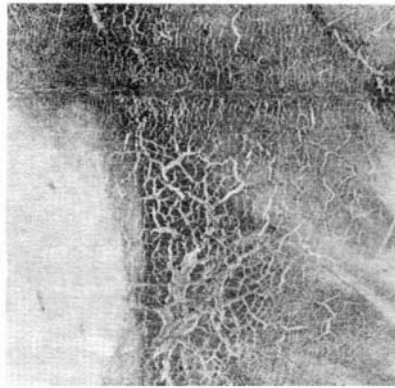
(5)

:Blanching - 4

:() Craquelur - 5

(5)

⁵ Gettens, R. G. and Stout G. L. op. Cit, PP. 165-166

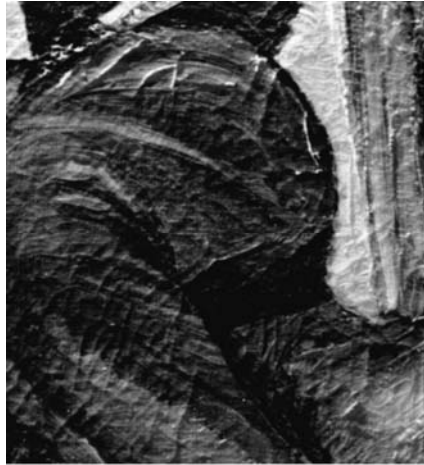


(5)

Bitumen

:Cracks - 6

(6)



(6)

:

- 7

Dammar

:Flaking

- 8

:

(7)

.....



بعد الترميم



قبل الترميم

(7)

Blesters

:Bukled Paint

- 9

:Loss of Cohesion

- 10

: (8)



بعد الترميم



قبل الترميم

(8)

:

- 11

:Attrition of Painted Surface

- 12

(9)

(6)

⁶ Stolow, N, Conservation Standards for work of art in Transition Exhibiton Museums and Monments, XVII, Unesco, French, 1979, P. 29.



قبل الترميم



بعد الترميم

(9)

:Wrinkling - 13

()

:Lacconaes - 14

:Tearsars Dents - 15

:

()

50

(7)

100

.154

:

7

:
:Darkening Blooming - 1

:Craquelure - 2

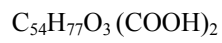
: Flouing - 3

:Shrinkage - 4

:Wrinkling - 5

(*)

:Stream Lines - 6

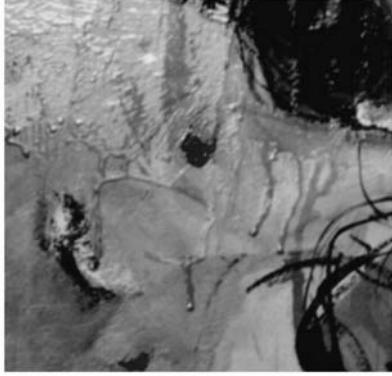


: (*)

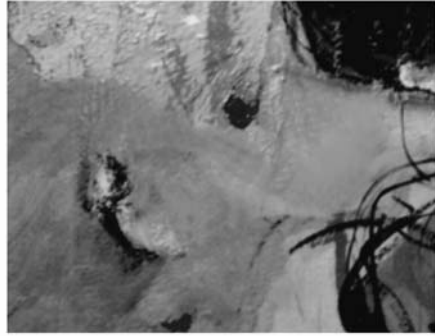


Sulphuric Acid

(10).



قبل الترميم



بعد الترميم

(10)

:Streakings

- 7

- 8

Dirty Appearance

Activated Carbon Filter

60%

Inert Gas

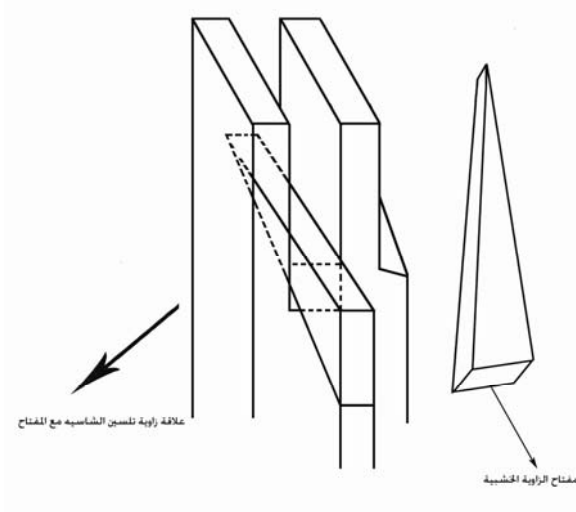
:

Vernice Finale

()

(11)

()



(11)

()

%15

%30

%40

%5

%10

.()

Inpainting

(8)

Improve

⁽⁹⁾Mayer

Pur

:

:

⁸ Plendleith, H.J. and Werner, A.E, op. Cit, Cit, P. 180.

⁹ Mayer, R., op. Cit, PP. 513-520.

(10)

.
:
()
/ / 750 •
() 2 + 20 + 2 •

¹⁰ John. M, Mourice, F, the Car of Antiques – Preface y Werner, A. F., Fore Word by Norman Brommelle, 1980, P. 83.

/15

.Col De Basta

:

.()

200 +

2.400 •

.()

()

+

8 •

()

Ethyl Alcohol

Ethanol

Toluene

Acetone

Castor Oil

... (Methyl Benzene)

() Gesso

+ + +

:

-1'

-2'

()

Patavia Dammar

%7 %5

()

Paradex

Synthetic



- 3

- 4

- 5

- 6

- 7

:

.218 1983 -1

153 -2

.1998

3- Emile- Male. G, op, op. Cit, PP- 12- 24.

4- Gettens, R.G. and Stout, G. L., Painting Materials, Dover Publications, New york, 1966, P. 138.

5- Stolow, N, Conservation Standards for work of art in Transiton Exhibiton Museums and Monments, XVII, Unesco, French, 1979, P. 29.

6- Plendleith, H. J. and Werner, A.E.,op. Cit, Cit, P. 180.

7- John. M, Mourice, F, the Car of Antiques – Preface y Werner, A. F., Fore Word

by Norman Brommelle, 1980, P. 83.

.2006/12/21