

**2004 1960**

\*

:  
.2004 1960

:

(1)

.. (2)

:

.. ..

:

:

.2004 1960 .

.

.

.

.

---

: (1)

.( )

.16 (1976 )

: (2)

:

-1

-2

-3

-4

-5

-6

:

: :

: -

.2004 . 1854  
. 1960

-

/1/

:2004 1960

( )		
32	4565000	1960
32.8	6305000	1970
33.5	9046000	1981
32.7	13812000	1994
25.8	17793000	2004

:

44

%031

.(%08)

:

-

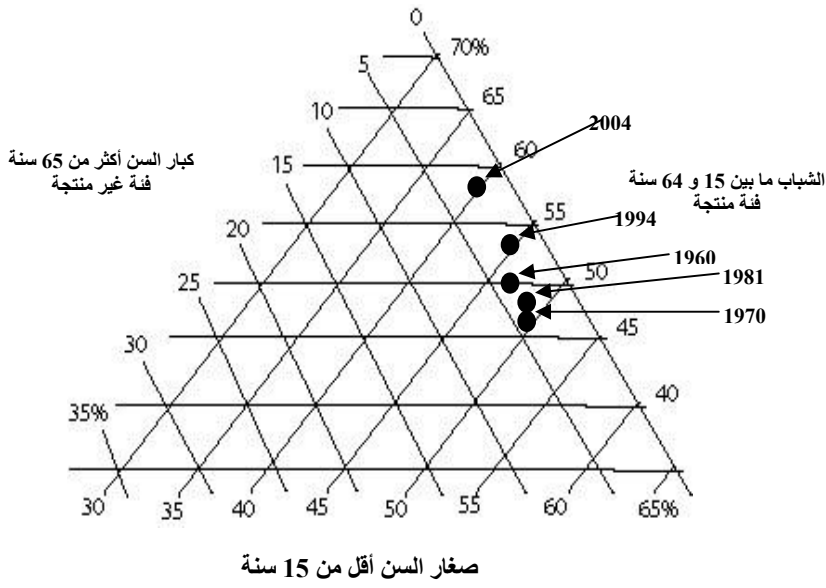
-1

-2

-3

/1/

.2004 1960 ( )



1981 1970 1960

/1/

2004 1994

1981-1960

%2.8 %1.9

%41

2004 1981

.  
%3.8

.  
64-15

%44.8 1960

%48.8

.2004 39.5 1994

.2004 % 57.2 1994 % 52.2

%4.7

2004

% 3.3

1994

%3.0

1960

.\*(%39.5)

---

$$\frac{100}{65} + \frac{15}{64 \cdot 15} = *$$



: -

:

(1) ( )

( )

(( ))

(2)

---

(1)

(2)

1970

(1)

(2)

: -1

.2004 1960

/2/

2004/ 2000	1994/ 1981	1981/ 1970	1970/ 1960	
70.3	62.5	62.5	49.3	( )

: :

1993

-

.(3 )

.1970

-

1960

21

2004

---

: (1)

: (2)

56.3

65.2 69.2 1970

53

.1995

:

-2

/3/

.2004 1960

%					
%					
100	25	5.5	45.9	1141265	1960
153.5	24.1	5.4	43.4	1570776	1970
205.5	24.1	7.9	39.7	2323000	1983
355.1	29.3	-	-	4053000	1994
430.3	27.6	-	-	4910868	2004

:

2004 1960 3769603  
 %24.1 %26.3

1991-1983 . %38

2004 1994 %50.0

0 % 21.2

:

**1960**

**/ 4 /**

**.2004**

%			
47.2	1452337	3071376	1960
40.4	1570776	3888410	1970
36.9	2323000	6298000	1983
40.0	3486000	8695000	1991
56.1	4053000	7222000	1994
48.2	4910868	10177595	2004

:

26 100 74  
 28 100 72 .1960  
 100 58) .2004

( 42

)

( 100

100 300.00

1970 (1) 1960

100 178.6

2004 %314.5

1983 %301.4

%.259.4

: - 3

0

( )

.424 1985

---

(1)

.1997 1960

6.8	3.3	6.4	10.5	%
236000	77000	100369	119735	
2.5	0.5	0.6	1.7	%
88000	12000	8989	19397	
4.2	2.8	5.8	8.8	%
148000	65000	91380	100338	
93.3	96.7	93.6	89.5	%
3250000	2246000	147047	1021530	
15.5	15.5	10.0	7.0	%
540000	360000	157170	80810	
77.7	81.2	83.6	82.4	%
2710000	1886000	131237	940720	
1997	1983	1970	1960	

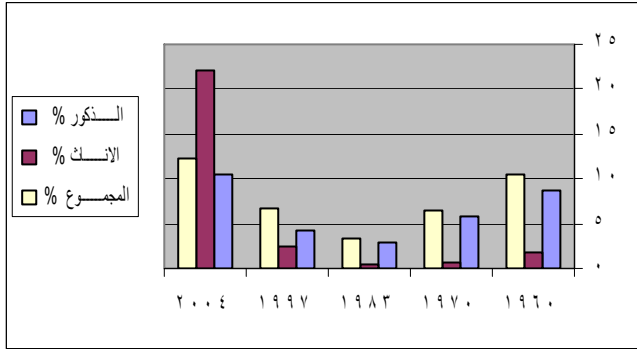
.1997 1960 %37.6

%93.2 %89.5

(1997 - 1960)

( 2 )

2004 1960



( )

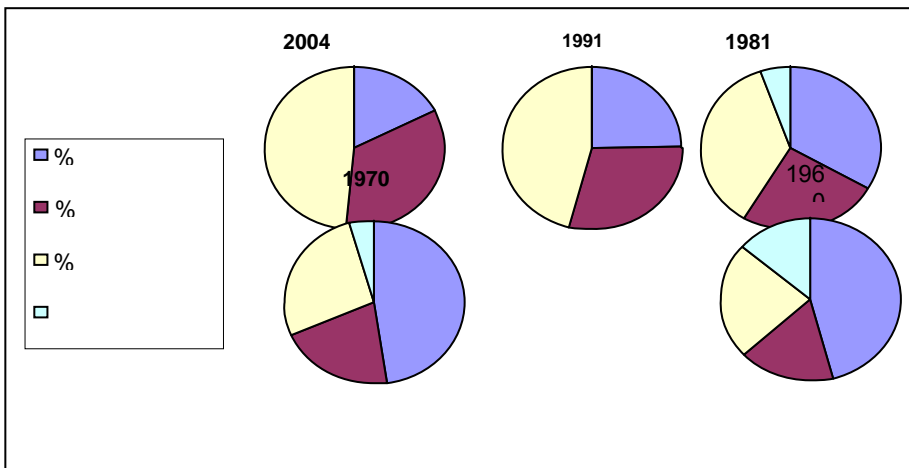
: -4

:

/3/

/ 3 /

2004 1960







:

171

2004 1960

%		2004	1995	%		1991	1981	%		1970	1960	
3.2-	38.1-	17.7	28.6	1.3	16.1	28.8	24.8	0.4	5.3	47.9	45.5	
4.1-	50-	0.2	0.4	3.3-	40-	0.3	0.5	4.2	50	0.6	0.4	
1.4-	17.1-	13.1	15.8	0.8-	9.0-	14.0	15.4	0.9	11.0	12.1	10.9	
5.3-	63.6-	0.4	1.1	0.05-	0.7-	0.3	1.0	1.4-	16.7-	0.5	0.6	
5.0	60.3	20.2	12.6	50-	600-	10.5	16.5	3.6	43.1	7.3	5.1	
1.3-	15.9-	11.6	13.8	1.9	23.3	11.1	9.0	1.4	16.7	9.1	7.8	
1.6	19.2	6.2	5.2	1.8	21.5-	5.1	6.5	5.8	70	4.1	3.4	
7.2-	86.7-	0.2	1.5	1.0-	12.5-	0.7	0.8	-	-	0.6	-	
2.3	27.1	26.7	21.0	3.7	44.5	29.2	20.2	0.6	7.14	13.5	12.6	
-	-	3.7	-	-	-	-	5.3	80.6-	68.6-	4.3	13.7	
		100	100			100	100			100	100	

:

.1981 1960

1991 - 1981

:

1991

. 1995

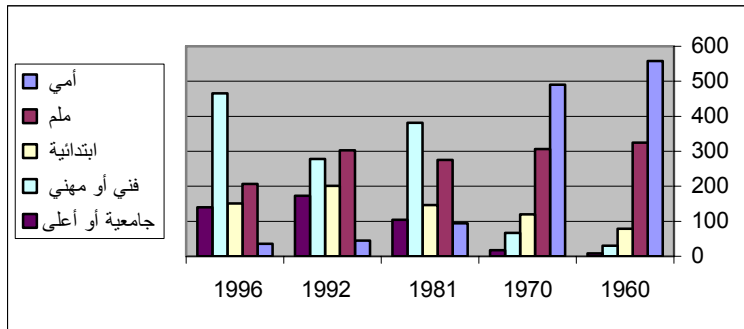
2004

:

**-5**

.1996 1960

(4)



:

( )					
2004	1996	1992	1981	1970	1960
19	36	45	94	490	558
204	207	303	275	306	325
184	151	201	146	120	79
476	466	278	381	67	30
117	140	173	104	17	8
1000	1000	1000	1000	1000	1000

:

**-6**

/5/

.1997 %15.5 .1960 %7  
%0.5 1960 %1.7  
22.5 1997 %2.5 1983  
2004

:

: 2000 1960

-1

%032.6

%98.8

( )

-2

%4.7

.%46.4 %48.8

%3.3

-3

-4

-5

-6

:

-1

-2

-3

-4

-5

-6

-7

-8



-	-	-	-	-	-1
				.1986	
.1986 -	-	-	-	-	-2
-		-			-3
	.1995-	-	-	-	
				-	-4
	.1991 -	-		-	
-				-	-5
		.1992 -	-		
	-				-6
		.1999 -	-		
-	-			-	-7
				.1992 -	-
.1974 -	- 1973			-	-1
.1982 -	- 1982			-	-2
- 1960 :			-		-3
		.2004 - 1994 - 1981-	1970		
-	-	-			-4
				.1993	

- 1960 : - -5  
 .2000 - 1998 - 1995 - 1990 - 1984 - 1980 - 1975 - 1970  
 . - - -6  
 - -1  
 17 - - 1994 1960  
 .2001

- 1- Gregory S. Statistical methods and the geographer , London ,1971.
- 2-The World Almanac and Book of facts , New York , 1990.
- 3- U.N. ( 1987 ) National Accounts studies of the ESCWA Region.Bulletin , 9.  
 N. y.
- 4- U. N. ( 1988 ) Department of Economic and social Affairs / population studies  
 " Multilingual demographic Dictionary – English Section ". N. y.
- 5- U. N. ( 1993 ) Economic and Social commission for Western Asia "  
 Compendium of social statistics and. Third. Issue ( Amman ).
- 6- U. N. ( 1994 ) UNFPA , The State of World population , 1994. N. Y.

---

.2006/4/14